



Developing estates into realities

Project :

A-104 Vipul World

Sector 48, Sohna Road, Gurgaon, Haryana

3 BHK, Area : 240 sq yds (200 sq mts):



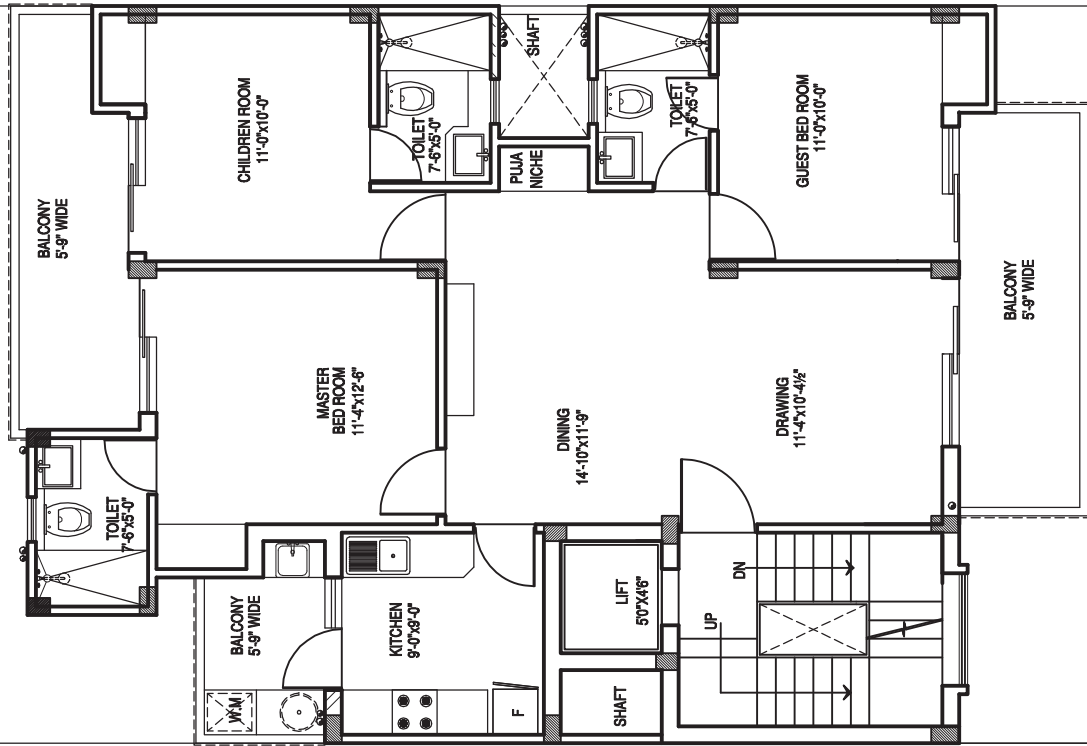
KINGS
Living

Upper Ground + Basement

First Floor

Second Floor + Half Terrace

**Plot Area = 200sq. mt.
(2152.8 sq. ft.)**



Specification

Interiors of the project have been creatively designed, bigger balconies Park facing, designer wood work, German CP fittings and fully fitted wooden modular cupboards and modular Kitchen, copper pipes have been fitted for split AC's in the entire floor.

Wall Finish

- External** : Designer elevations with a combination of high-end finishes of stone, paint and HPL
- Internal** : Plastic emulsion on POP base
- Ceiling** : Designer false ceilings in all rooms including Toilets and Kitchen

Kitchen

- Type** : Modular Kitchen premium quality
- Walls** : Premium decorative tiles
- Fittings** : Granite counter with recessed bowl stainless steel sink & drainer fitted with single lever mixer, Provision for Hob and Chimney.

Doors

- Internal** : Frames Ivory Coast or equivalent, doors - Flush doors
- External** : UPVC doors and windows with toughened glass

Common Facilities

- Stilt parking and with Elevator.
- Provision for 2 parking slots per flat.
- 1 Servant quarter per flat on terrace.

Status as of January 2015 : All construction is complete and finishing work is nearing the end.

Expected possession by February 2015.

Flooring

- Living & Dining & Family Lounge** : Premium vitrified tiles 800x800mm
- Bedrooms** : Laminated wooden flooring from Pergo or equivalent
- Kitchen & Bathrooms** : Premium anti-skid tiles
- Balconies & Terraces** : Marble
- Utility** : Marble
- Basement** : Premium Vitrified tiles
- Staircases** : Marble
- Lift Lobby/Entry passage*** : Marble / Granite*
- Stilt Car Parking Area*** : Kota stone

Toilet

- Dado** : Premium ceramic tiles up to ceiling
- Fittings & Fixtures** : White sanitaryware premium brand, single lever CP fittings from Grohe or equivalent, wall hung WCs, domestic help/utility toilet

Electricals

- AC** : Copper pipes fitted in all rooms for Split AC..
- Power Backup** : Power backup provided by Vipul World for 2 KV per flat
- Lift** : 5 passengers lift from Schindler or equivalent



Registered Office: A-1/2 First floor, Bhaskar Compound,
Abul Fazal Enclave, New Delhi 110025 | E-mail: info@kingsliving.com

www.kingsliving.com